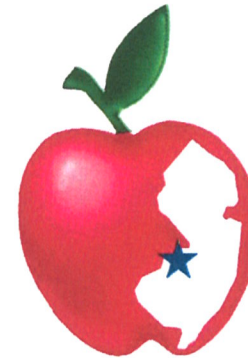


## The Haines Center - Burlington/Florence , NJ



THE HAINES  
CENTER

# THE HAINES CENTER

ROUTE 130 & NJ TURNPIKE EXIT 6A

BURLINGTON/FLORENCE TOWNSHIPS. NJ



PUBLIC TRANSPORTATION (On-site):



MAJOR ROUTES WITHIN MINUTES:







## **THE HAINES INDUSTRIAL CENTER**

*New Jersey's Newest Rail-Served Business Park*

### **A master-planned, 800 acre, rail served business complex**

The Haines Center spans Burlington and Florence Townships, in Burlington County, New Jersey. Located at Exit 6A of the New Jersey Turnpike, this exit is the entranceway to both the New Jersey Turnpike and New Jersey/Pennsylvania Turnpike connector. It's ideally situated, less than a 6 hour drive from the nation's most densely populated metropolitan markets and an hour drive to the ports of New Jersey and Philadelphia. The Center features daily Norfolk Southern/CSX rail service from freight car yards in Camden and Perth Amboy, New Jersey.

The Haines Center features a Park & Ride Commuter Station stop along the New Jersey Transit Trenton/Camden Light Rail system and New Jersey Transit Bus services. Both lines operate between Camden and Trenton with connectors to Philadelphia and New York. This, in addition to accessibility to all major roads in New Jersey and Pennsylvania attracts qualified employees from a large area in both states.

Conceived by Whitesell more than a decade ago, the Haines Center offers a variety of building sites from 5 to 60 acres, state-of-the-art warehousing and distribution facilities ranging from 80,000 square feet to 1,000,000 square feet.

Whitesell was founded in 1957 as a construction company, and offers an array of in-house services ranging from site design, architectural planning, construction and property management services. It has developed over 20 million square feet of high quality industrial and office structures, and has retained ownership of 9 million square feet.





200 Richards Run— Sports Authority



400 Richards Run— NFI



1500 John Galt Way — International Paper



309 Dultys Lane — BJ's Wholesale



The Haines Center



1500 John Galt Way — Rail Served—Intermodal Transport



1100 John Galt Way— Home Depot Supply

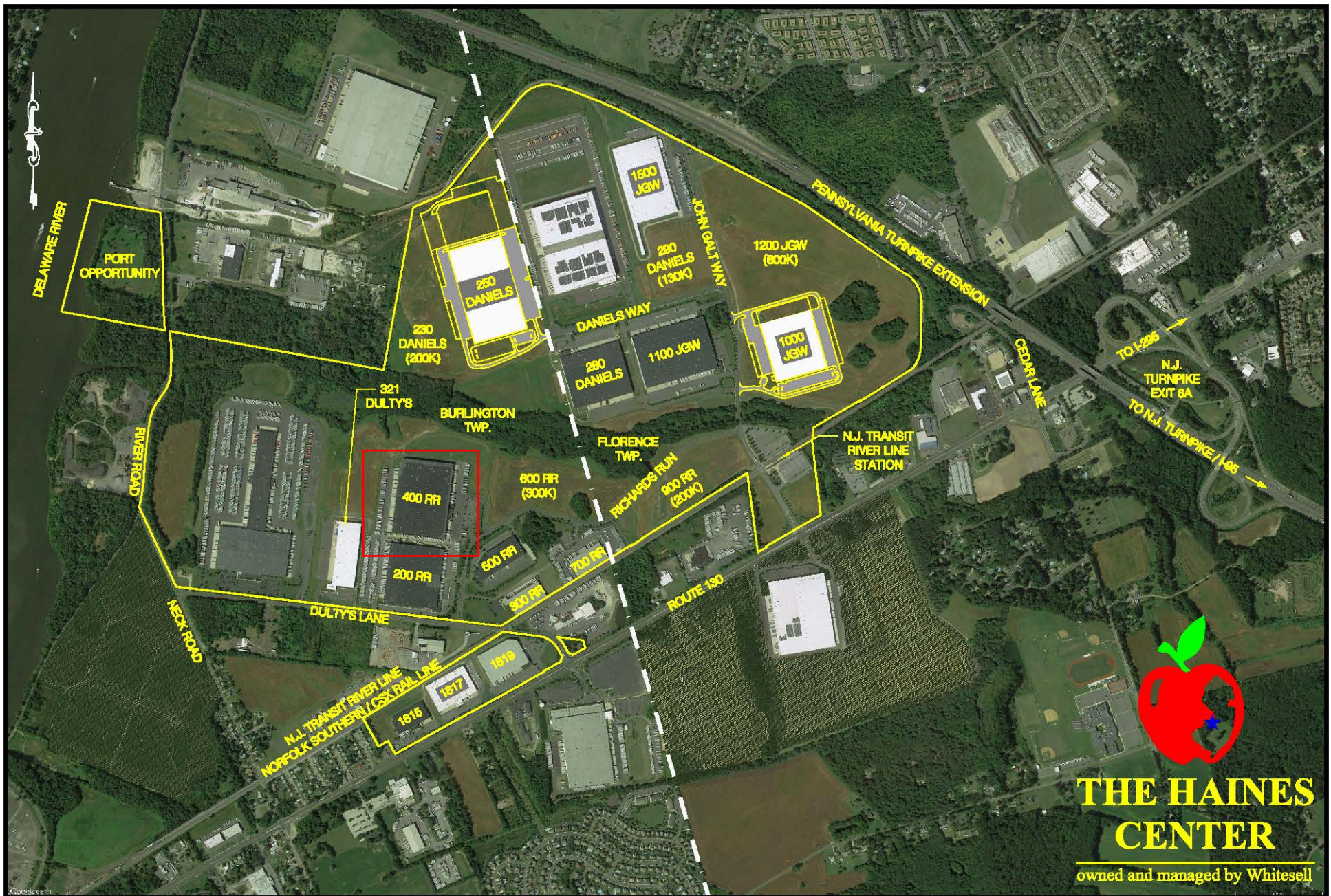


NJ Transit Light Rail — Onsite Florence Stop



321 Dultys Lane — Ta Chen





# THE HAINES CENTER

owned and managed by Whitesell



## Whitesell

One Underwood Court, Delran, New Jersey 08075  
Phone: (856) 764-2600 Web: [www.whitesellco.com](http://www.whitesellco.com)

### Issue/Revision

| No. | Date     | Description          |
|-----|----------|----------------------|
|     | 01/28/11 | ISSUED               |
| 1   | 07/02/14 | UPDATED AERIAL IMAGE |

SCALE:

N.T.S.

DATE:

01/28/11

Drawn By:

SCT

Job No.

DESCRIPTION:

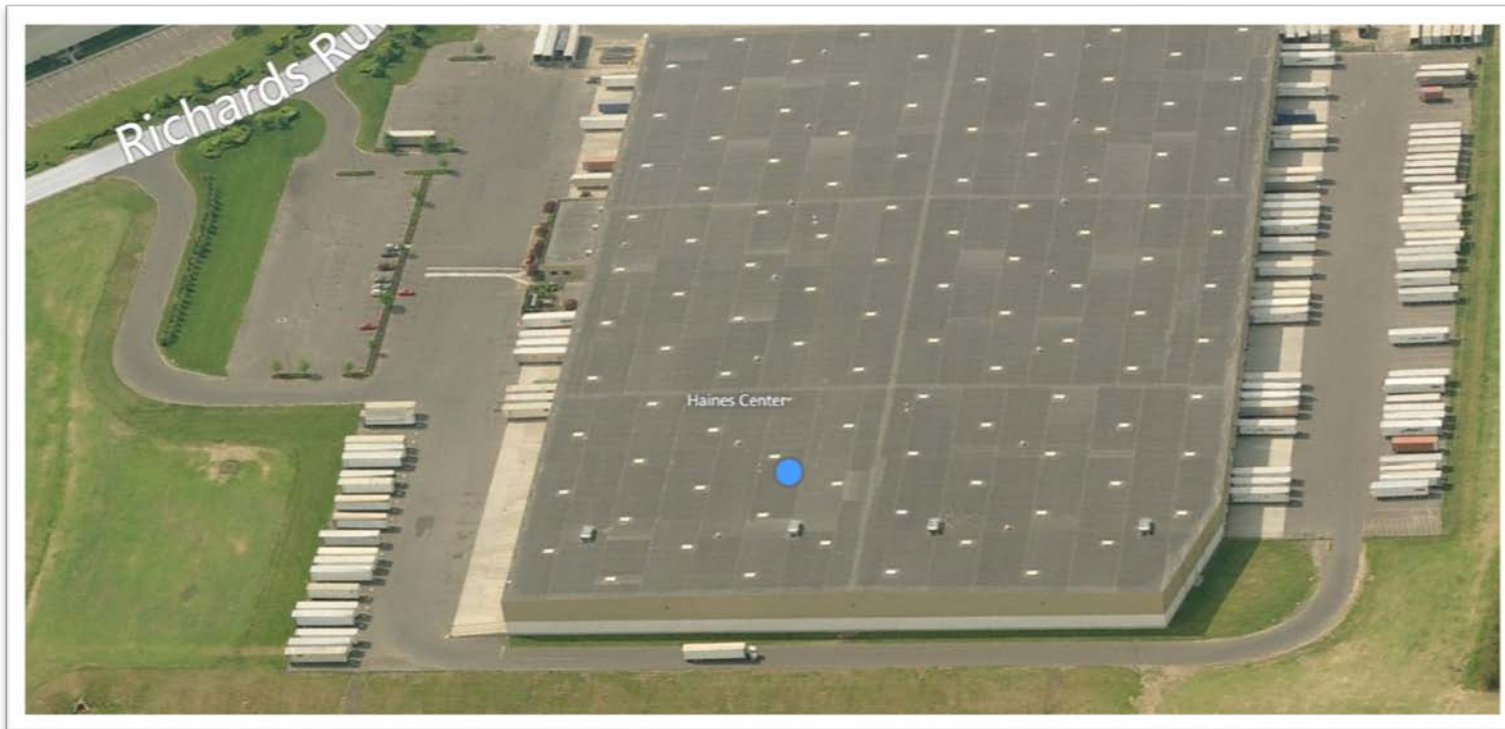
THE HAINES CENTER  
BURLINGTON & FLORENCE TOWNSHIPS  
BURLINGTON COUNTY, NJ

DWG. No.

MP-1



**400 Richards Run, Burlington, NJ**



400 Richards Run



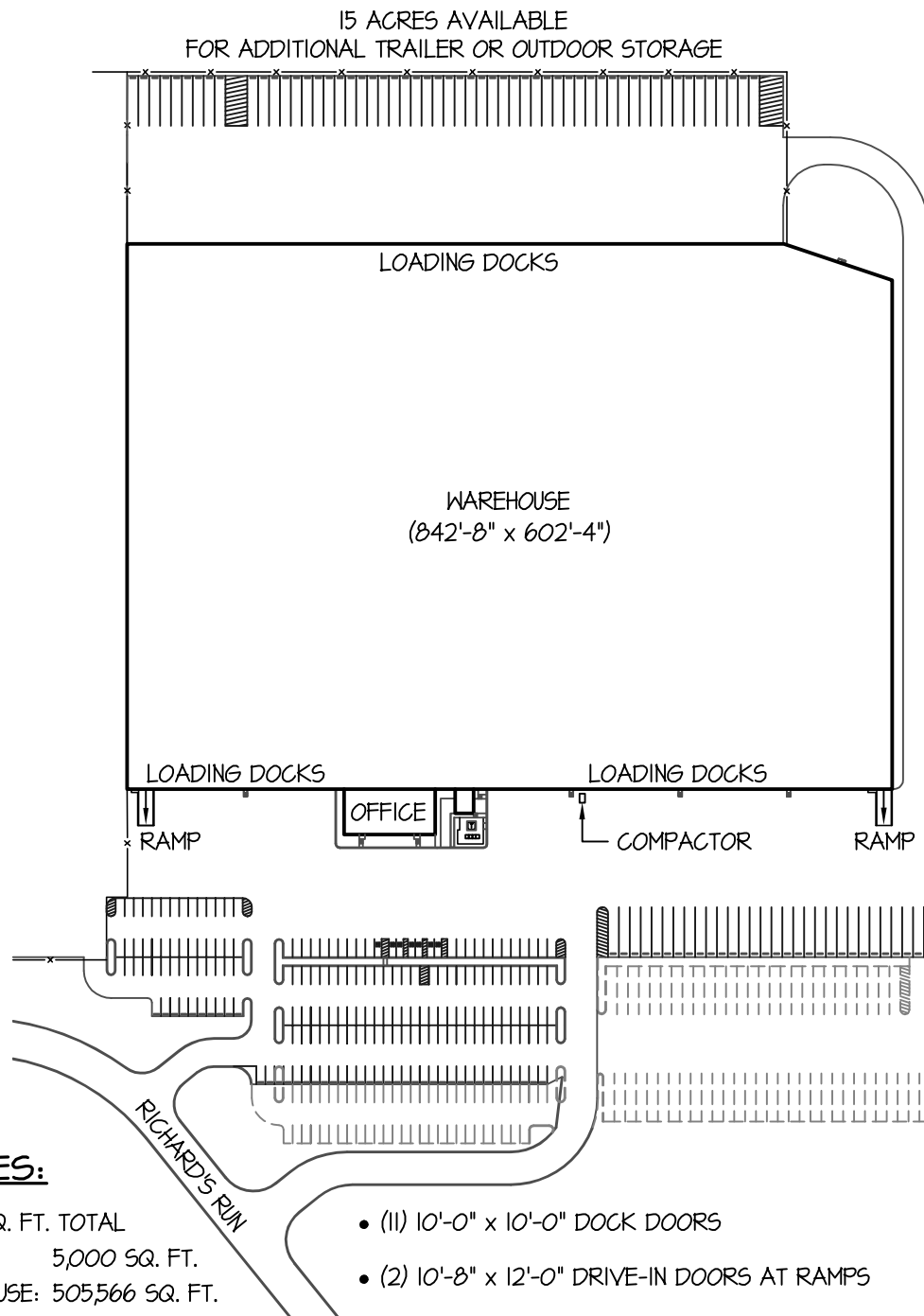












## FEATURES:

- 510,566 SQ. FT. TOTAL
  - OFFICE: 5,000 SQ. FT.
  - WAREHOUSE: 505,566 SQ. FT.
- ELECTRICAL SERVICE:
  - 480/277 VOLTS; 3 PHASE; 4000 AMPS
  - 208/120 VOLTS SUBPANEL
- TYPICAL STRUCTURAL BAY:
  - 40'-0" x 60'-0"
- CLEAR HEIGHT: MIN. = 30'-9"  
MAX. = 31'-0"  
1ST COLUMN LINE = 32'-0"
- (74) 8'-0" x 10'-0" DOCK DOORS
- (11) 10'-0" x 10'-0" DOCK DOORS
- (2) 10'-8" x 12'-0" DRIVE-IN DOORS AT RAMPS
- (1) 8'-0" x 10'-0" KNOCKOUT
- (9) 10'-0" x 10'-0" KNOCKOUTS
- PUBLIC WATER & SEWER
- 201 AUTOMOBILE PARKING SPACES  
(EXPANDABLE TO 260 STALLS)
- 85 TRAILER SPACES  
(EXPANDABLE TO 140 STALLS)
- ZONING: I-2 (INDUSTRIAL HEAVY)



# Whitesell

One Underwood Court, Delran, New Jersey 08075  
Phone: (856) 764-2600 Web: [www.whitesellco.com](http://www.whitesellco.com)

UNIT No.

SITE

DATE:

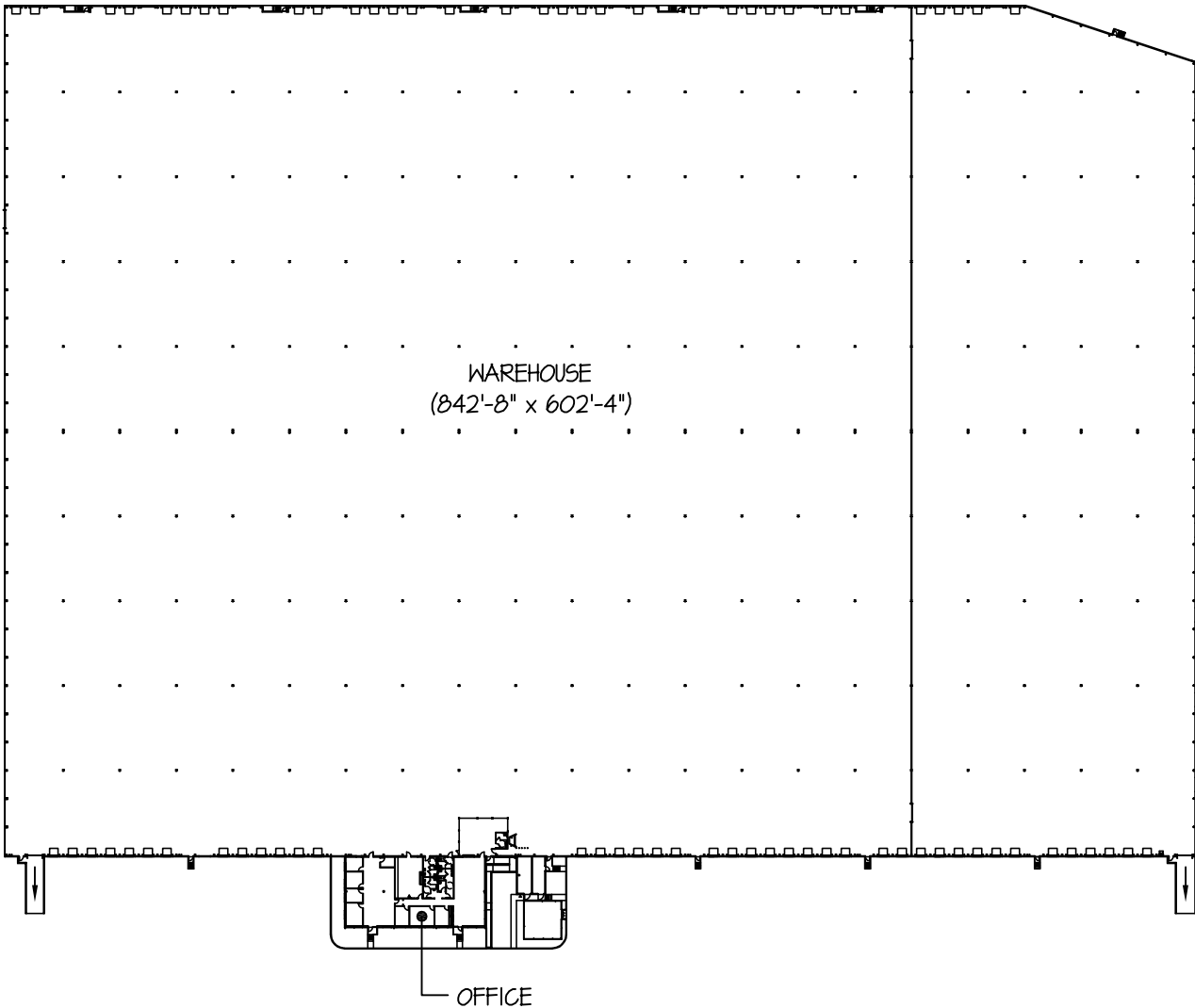
08/27/14

SCALE:

1" = 200'

400 RICHARDS RUN  
BURLINGTON, NEW JERSEY





### FEATURES:

- 510,566 SQ. FT. TOTAL
  - OFFICE: 5,000 SQ. FT.
  - WAREHOUSE: 505,566 SQ. FT.
- ELECTRICAL SERVICE:
  - 480/277 VOLTS; 3 PHASE; 4000 AMPS
  - 208/120 VOLTS SUBPANEL
- MECHANICAL SERVICE:
  - GAS HEAT
  - OFFICE AIR CONDITIONED
- TYPICAL STRUCTURAL BAY:
  - 40'-0" x 60'-0"
- CLEAR HEIGHT: MIN. = 30'-9"  
MAX. = 37'-0"  
FIRST COLUMN LINE = 32'-0"
- (74) 8'-0" x 10'-0" DOCK DOORS
- (11) 10'-0" x 10'-0" DOCK DOORS
- (2) 10'-8" x 12'-0" DRIVE-IN DOORS AT RAMPS
- (1) 8'-0" x 10'-0" KNOCKOUT
- (9) 10'-0" x 10'-0" KNOCKOUTS



# **Whitesell**

One Underwood Court, Delran, New Jersey 08075  
Phone: (856) 764-2600 Web: [www.whitesellco.com](http://www.whitesellco.com)

UNIT No.

**OVERALL**

DATE:

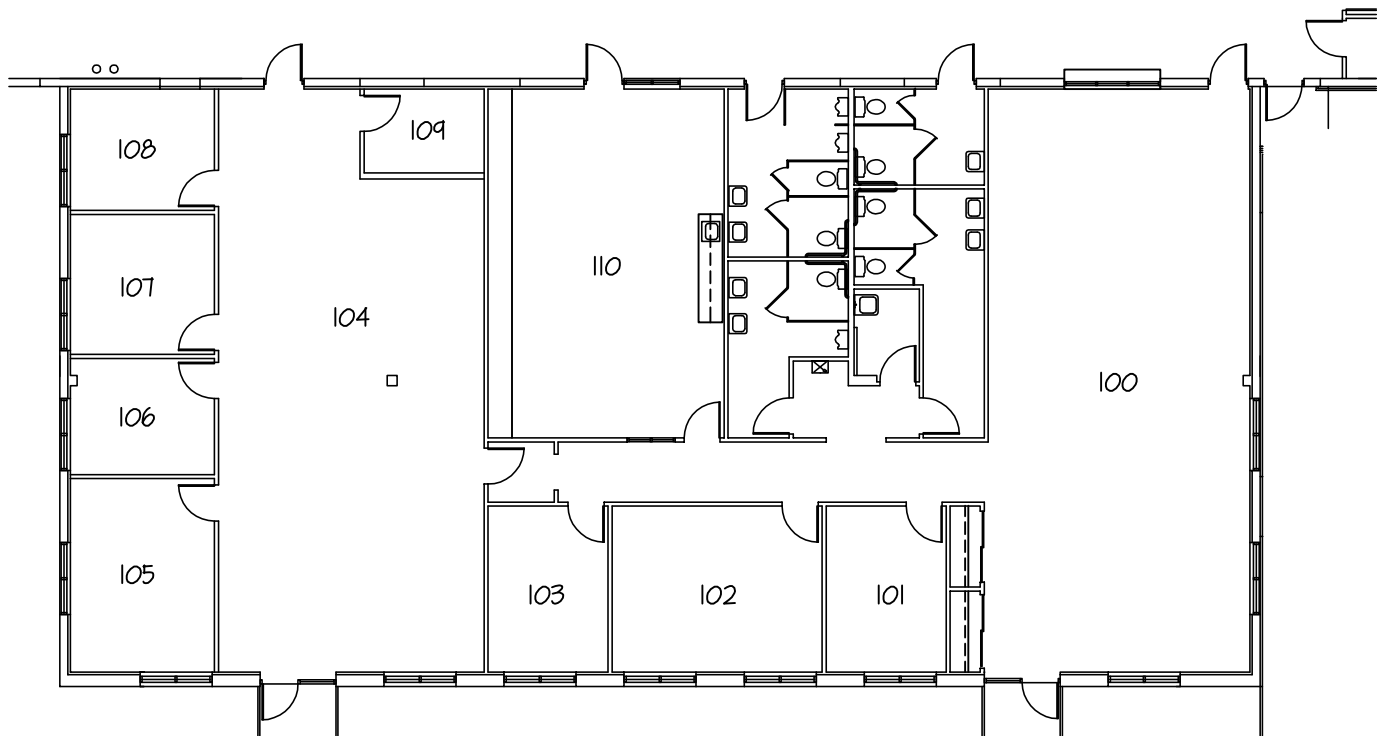
**08/27/14**

SCALE:

**N.T.S.**

**400 RICHARDS RUN  
BURLINGTON, NEW JERSEY**





### FEATURES:

- OFFICE: 5,000 SQ. FT.
- MECHANICAL:
  - GAS HEAT
  - OFFICE AIR CONDITIONED

### APPROX. ROOM SIZES:

- 100 - 21'-9" x 48'-7"
- 101 - 10'-0" x 13'-10"
- 102 - 17'-6" x 13'-10"
- 103 - 10'-0" x 13'-10"
- 104 - 22'-1" x 48'-7"
- 105 - 16'-1" x 12'-0"
- 106 - 9'-8" x 12'-0"
- 107 - 11'-8" x 12'-0"
- 108 - 10'-1" x 12'-0"
- 109 - 7'-0" x 10'-0"
- 110 - 19'-8" x 29'-1"



# **Whitesell**

One Underwood Court, Delran, New Jersey 08075  
Phone: (856) 764-2600 Web: [www.whitesellco.com](http://www.whitesellco.com)

UNIT No.

OFFICE

DATE:

08/27/14

SCALE:

1/16" = 1'-0"

**400 RICHARDS RUN  
BURLINGTON, NEW JERSEY**